

John R. Fisher (603) 674-4675

Real Estate Services Group

www.homehum.com

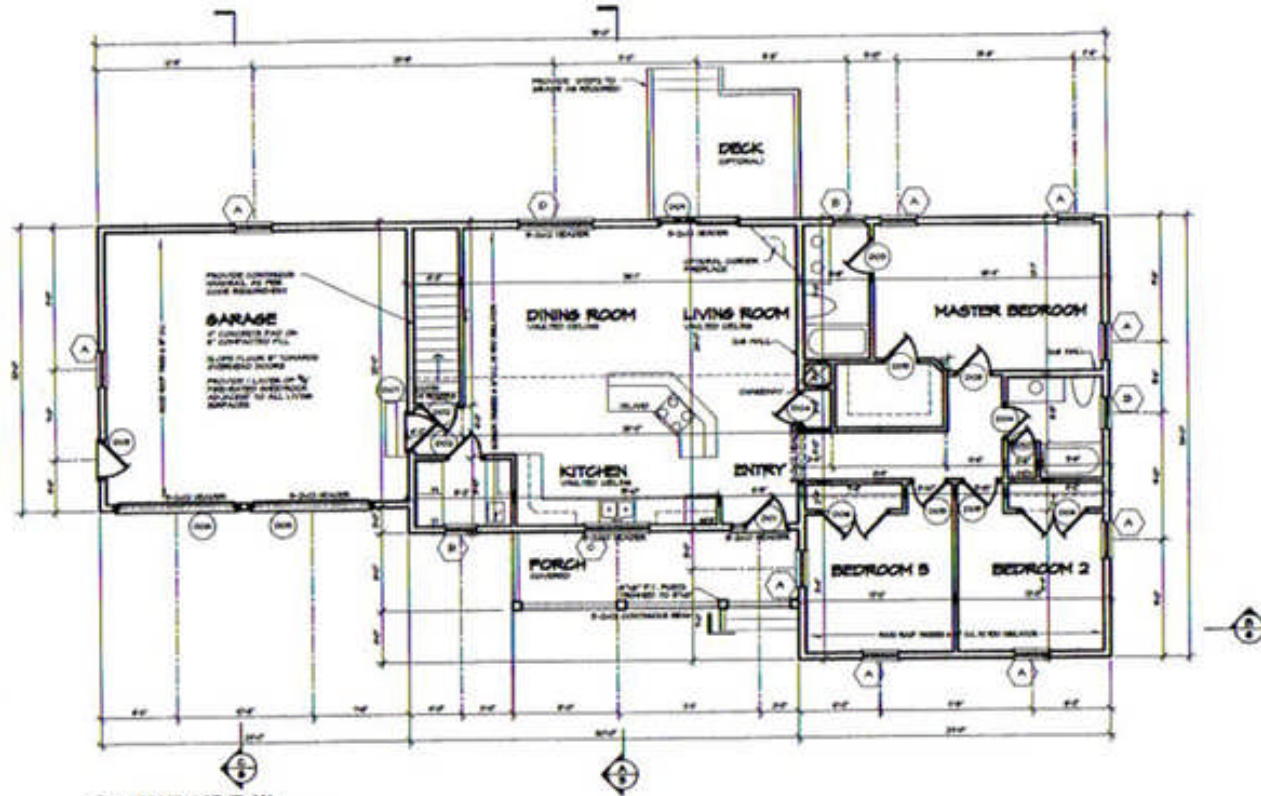
New construction in
New Ipswich NH



Prudential Verani-Foster Realty

Subject to errors, omissions and changes without notice

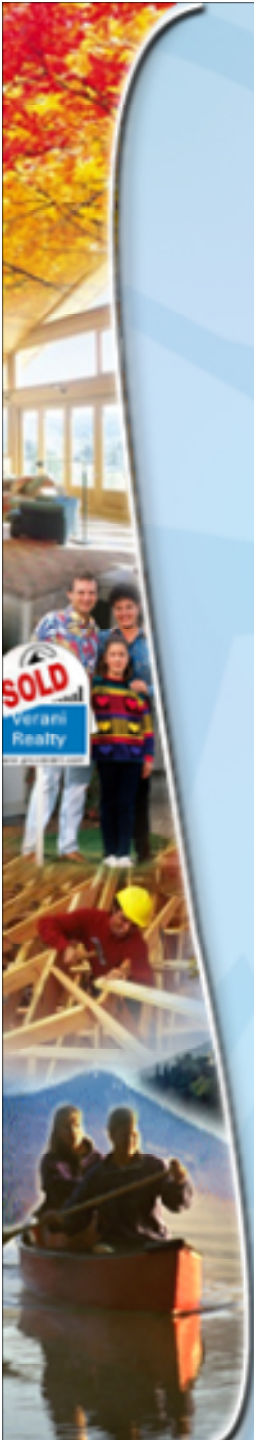
Great functional floor plan



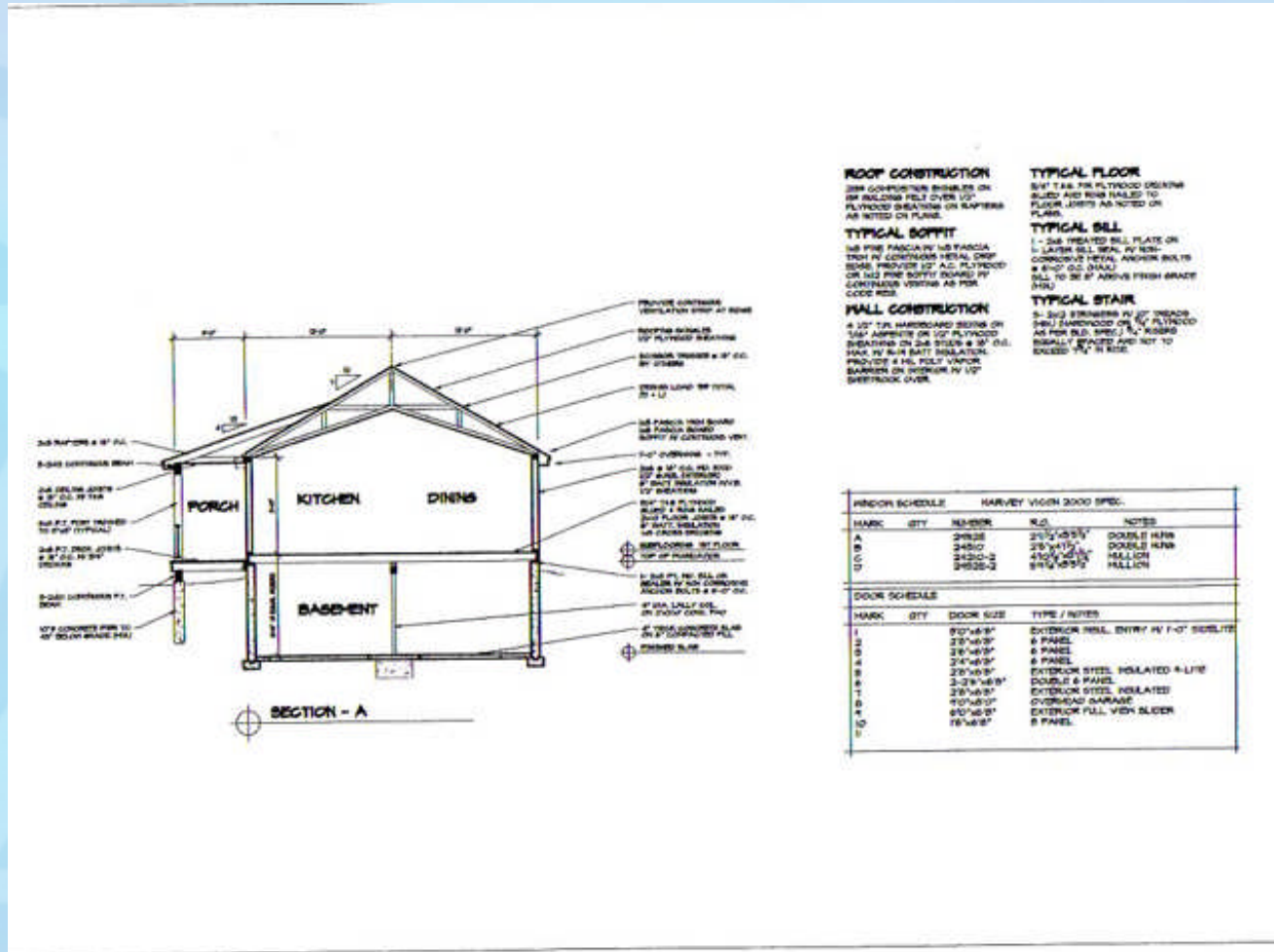
MAIN FLOOR PLAN

- NOTES:
1. 1/2" = 1'-0" GRAIN PAPER
 2. ALL EXISTING DOOR THRESHOLS TO REMAIN UNLESS INDICATED OTHERWISE
 3. ALL EXISTING WINDOWS & DOOR SCHEDULES TO REMAIN UNLESS INDICATED OTHERWISE
 4. FINISHES SHOWN FOR INFORMATION SOURCE NOT ACCOUNTED FOR AS PER CODE REQUIREMENTS
 5. ALL WORK TO BE VERIFIED BY ARCHITECT

Rock Solid in the Granite State



Detailed specs coming soon or call (603) 674-4675 for more info and an immediate response!



Rock Solid in the Granite State